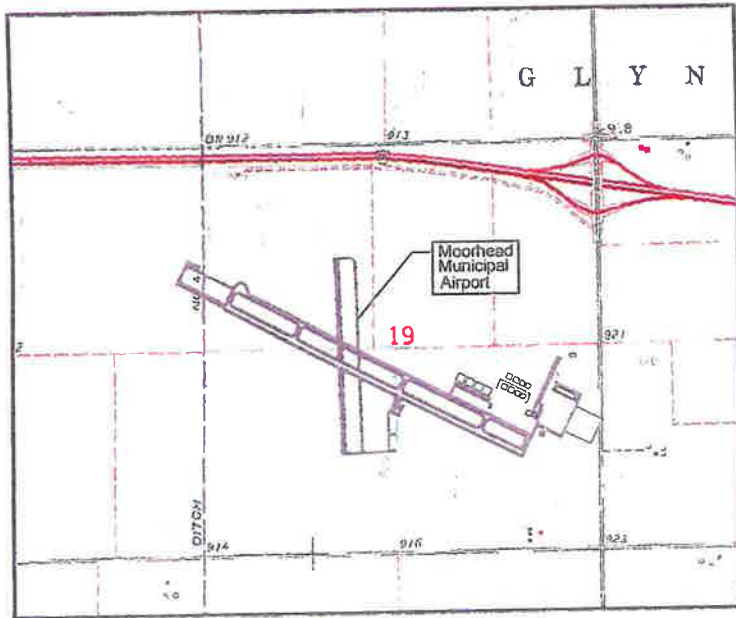
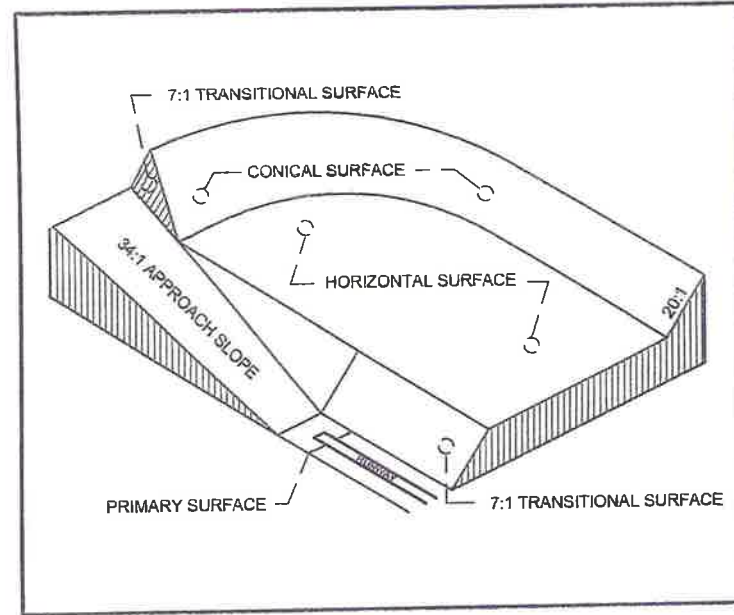


AIRPORT ZONING PLAN MOORHEAD MUNICIPAL AIRPORT MOORHEAD, MINNESOTA



LOCATION MAP

NOT TO SCALE



IMAGINARY SURFACES

NO SCALE



PLAN APPROVAL	
ZONING BOARD CHAIRPERSON	
Approved _____	
Date _____	
ZONING BOARD SECRETARY / CITY CLERK	
Approved _____	
Date _____	



SEH
Soil Engineering & Hazard
1001 10th Street NW
Grand Rapids, MN 55740
Phone: 507-325-1111
Fax: 507-325-1112
www.sehmn.com

AIRPORT ZONING MAP
FOR THE
MOORHEAD MUNICIPAL
AIRPORT

REV: 001
REVISION: 001

REVISED: 001
DATE: 10/1/10
BY: JRM

TITLE SHEET

SHEET
1
OF 3 SHEETS



3030 WYOMING CITY OF
 MOOREHEAD, MISSISSIPPI
 PHONE: 601.483.2200
 FAX: 601.483.2204
 WWW.SEH.COM

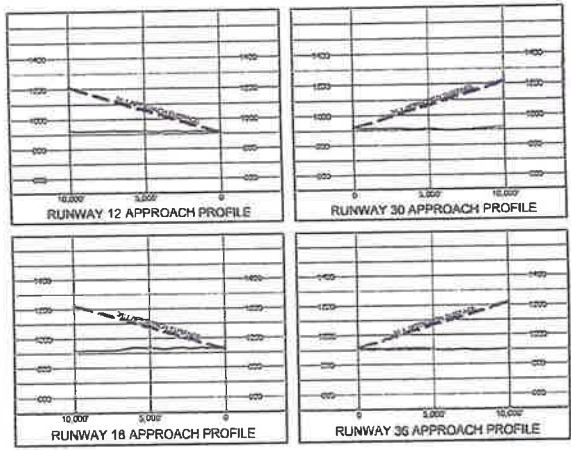
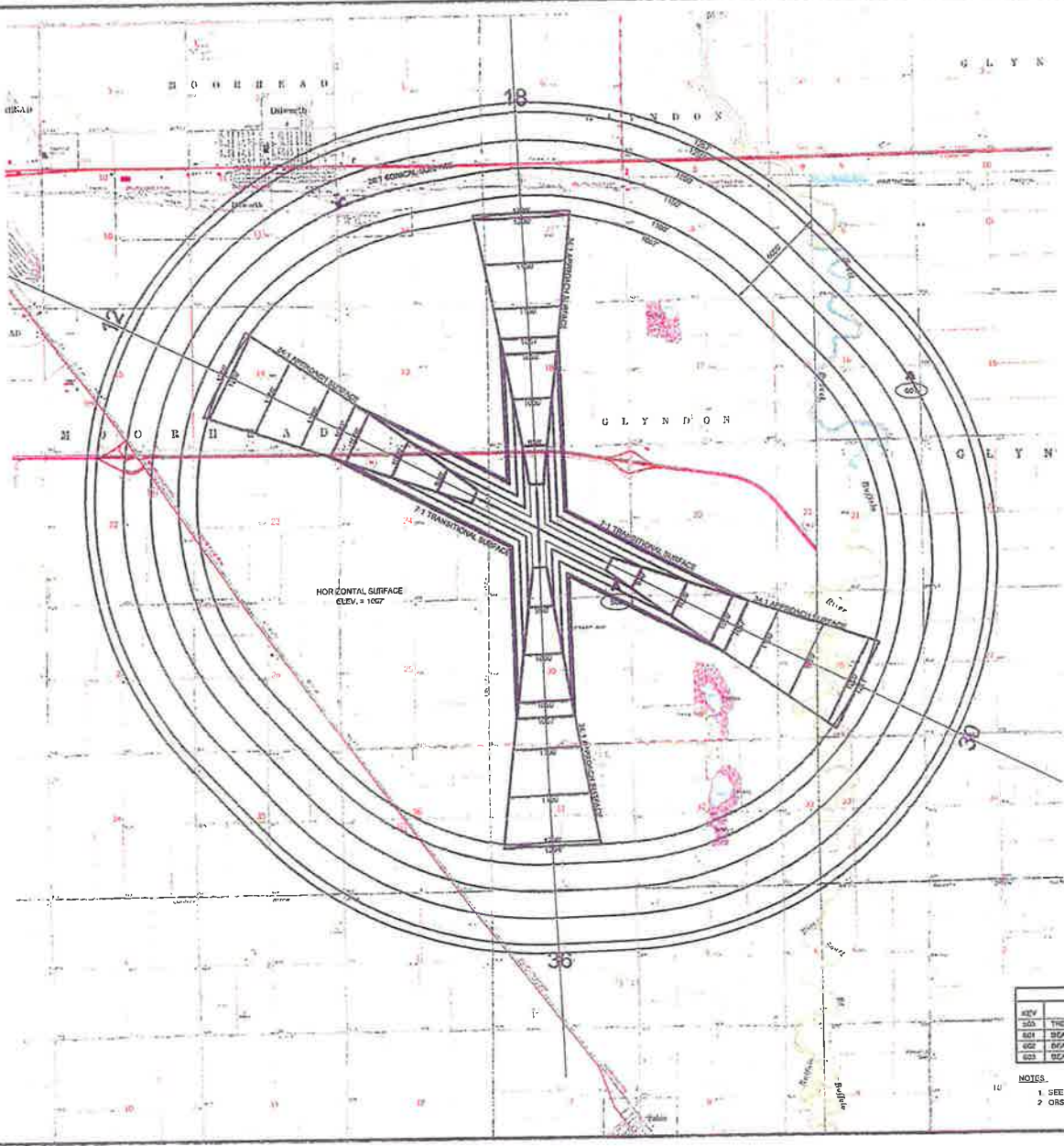
**AIRPORT ZONING MAP
 FOR THE
 MOORHEAD MUNICIPAL
 AIRPORT**

DATE: 12/15/2010
 REVISIONS:

PROJECT NO: 2009-001
 ISSUE DATE: OCT 23 2011
 DESIGNED BY: J. H. HARRIS
 DRAWN BY: J. H. HARRIS
 CHECKED BY: J. H. HARRIS

**AIRSPACE
 ZONING
 PLAN**

SHEET
2
 OF 3 SHEETS



FAA APPROACH SURFACE DIMENSIONS (PMTT F1)

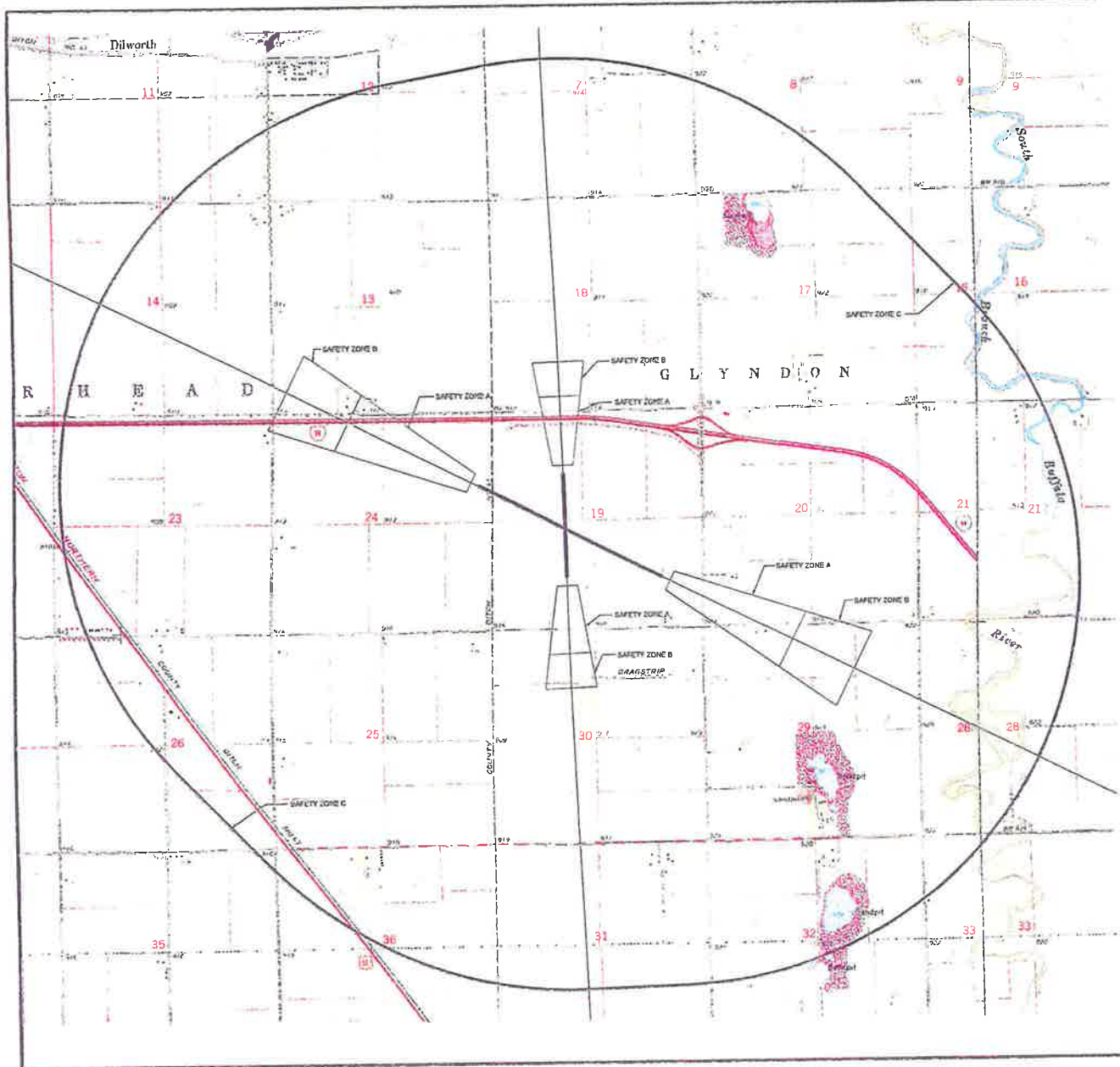
RUNWAY	INNER WIDTH	LENGTH	OUTER WIDTH	SLOPE
12	500'	10,000'	3,500'	24:1
30	500'	10,000'	3,500'	24:1
18	400'	10,000'	3,600'	24:1
36	500'	10,000'	3,200'	24:1



SCHEDULE OF OBSTRUCTIONS

REV	DESCRIPTION	ELEVATION	COMMENTS	DISPOSITION	LATITUDE	LONGITUDE
001	TREE	1000'	SEE SHEET 3	LIGHTED	46°22'04.82"	88°38'16.46"
001	BEACON ON COMMUNICATION TOWER	1100'	PENETRATION OF 3 mi RADIUS	LIGHTED	46°31'18.57"	88°36'41.24"
002	BEACON ON COMMUNICATION TOWER	1130'	PENETRATION OF 3 mi RADIUS	LIGHTED	46°31'18.57"	88°44'41.31"
003	BEACON ON COMMUNICATION TOWER	1130'	PENETRATION OF 3 mi RADIUS	LIGHTED	46°46'36.37"	88°45'11.11"

- NOTES:
 1. SEE APPROACH PLAN & PROFILE SHEETS FOR INNER APPROACH SURFACE OBSTRUCTIONS.
 2. OBSTRUCTIONS 002 AND 003 ARE LOCATED NEAR THE CITY OF MOORHEAD WEST OF THE AIRPORT.



Safety Zone Use Restrictions.

General restrictions: No use shall be made of any land in any of the safety zones which involves or causes interference with the operation of radio or electronic facilities on the airport or with radio or electronic communications between the airport and aircraft, unless a different provision is made by the following sections. No use shall be made of any land in any of the safety zones which involves or causes interference with the operation of radio or electronic communications between airport lights and other lights, signals or signs in the eyes of pilots using the airport, except in the vicinity of the airport, or otherwise endangers the landing, taking off, or maneuvering of aircraft.

Zone A: Safety Zone "A" shall contain no buildings, temporary structures, equipment, transmission lines, or other similar uses and structures, and shall be restricted to those uses which will not create, attract, or bring together an assembly of persons thereon. Prohibited uses may include, but are not limited to, such uses as agriculture (pasture, cropland, horticulture), raising of livestock, animal husbandry, wild life habitat, light outdoor recreation (recreational), cemeteries, and auto parking.

Zone B: Safety Zone "B" shall be restricted in use as follows. Each use shall be on a site whose area shall not be less than three acres. Each use shall not create, attract, or bring together a site population that would exceed 10 times that of the site average. Each site shall have no more than one building and upon which any number of structures may be located. The following uses are specifically prohibited in Zone B: churches, hospitals, taverns, theaters, stadiums, hotels and resorts, water courts, camp grounds, and other places of public or transpublic assembly.

Zone C: Safety Zone "C" is subject only to the general restrictions, as stated above. Safety Zone "C" is enclosed within the perimeter of the hazardous zone.

FUTURE AIRPORT ZONING OBSERVATIONS

RUNWAY	ZONE	MINIMUM WIDTH	LENGTH	OUTER WIDTH	SLOPE
12/30	SAFETY ZONE A	500'	3,333'	1,500'	2%:1
	SAFETY ZONE B	1,500'	1,667'	2,000'	2%:1
	SAFETY ZONE C	10,000' PARALLEL FROM END OF PROPERTY SURFACE			
18/20	SAFETY ZONE A	500'	1,000'	1,000'	2%:1
	SAFETY ZONE B	1,000'	1,000'	1,000'	2%:1
	SAFETY ZONE C	10,000' PARALLEL FROM END OF PROPERTY SURFACE			



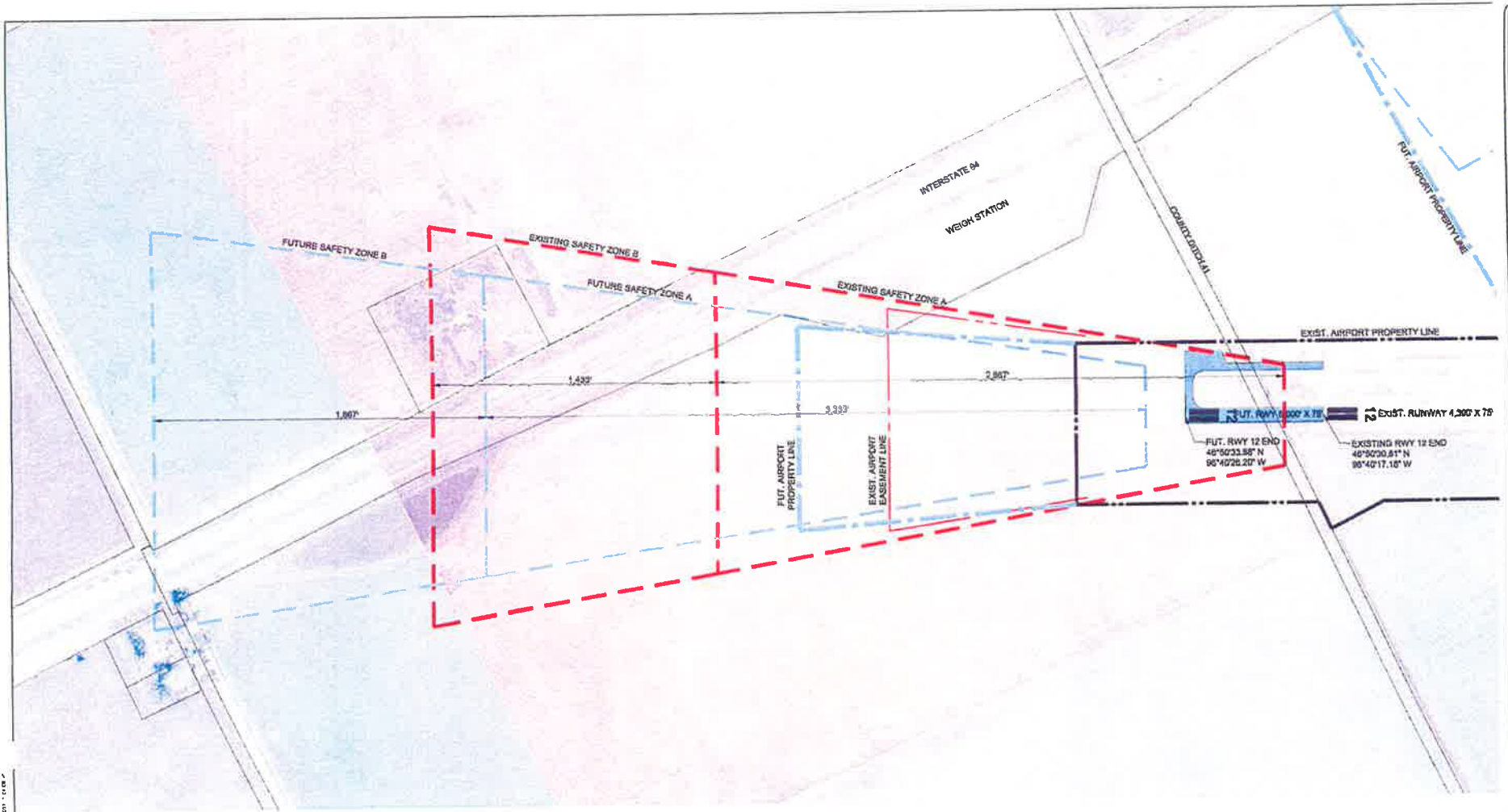
SEH ENGINEERING, INC.
1000 S. W. 10th St., Suite 100
Moorhead, MN 56501
Phone: 822-4000
Fax: 822-2200
www.seh.com

AIRPORT ZONING MAP
FOR THE
MOORHEAD MUNICIPAL
AIRPORT

SEH FILE NO. AMOOR-000000
ISSUE DATE: 08/22/07
DESIGNED BY: MNU
DRAWN BY: MNU
CHECKED BY: MNU
DATE: 08/22/07

MIN/DOT LAND USE
ZONING
PLAN

SHEET
3
OF 3 SHEETS



C:\Users\mshah\OneDrive\Documents\2023\AIRSPACE\A1\Map\123456.dwg



EXISTING		FUTURE	
	PROPERTY LINE		PROPERTY LINE
	EASEMENT		EASEMENT
	PANEL LINES		PANEL LINES
	PAVEMENT		PAVEMENT
	SAFETY ZONES		SAFETY ZONES



SEH
 2100 WINDY KNIFE RD
 SUITE 200
 MOORHEAD, MN 56503
 TEL: 218.835.4300
 FAX: 218.835.4301
 WWW.SEH.COM

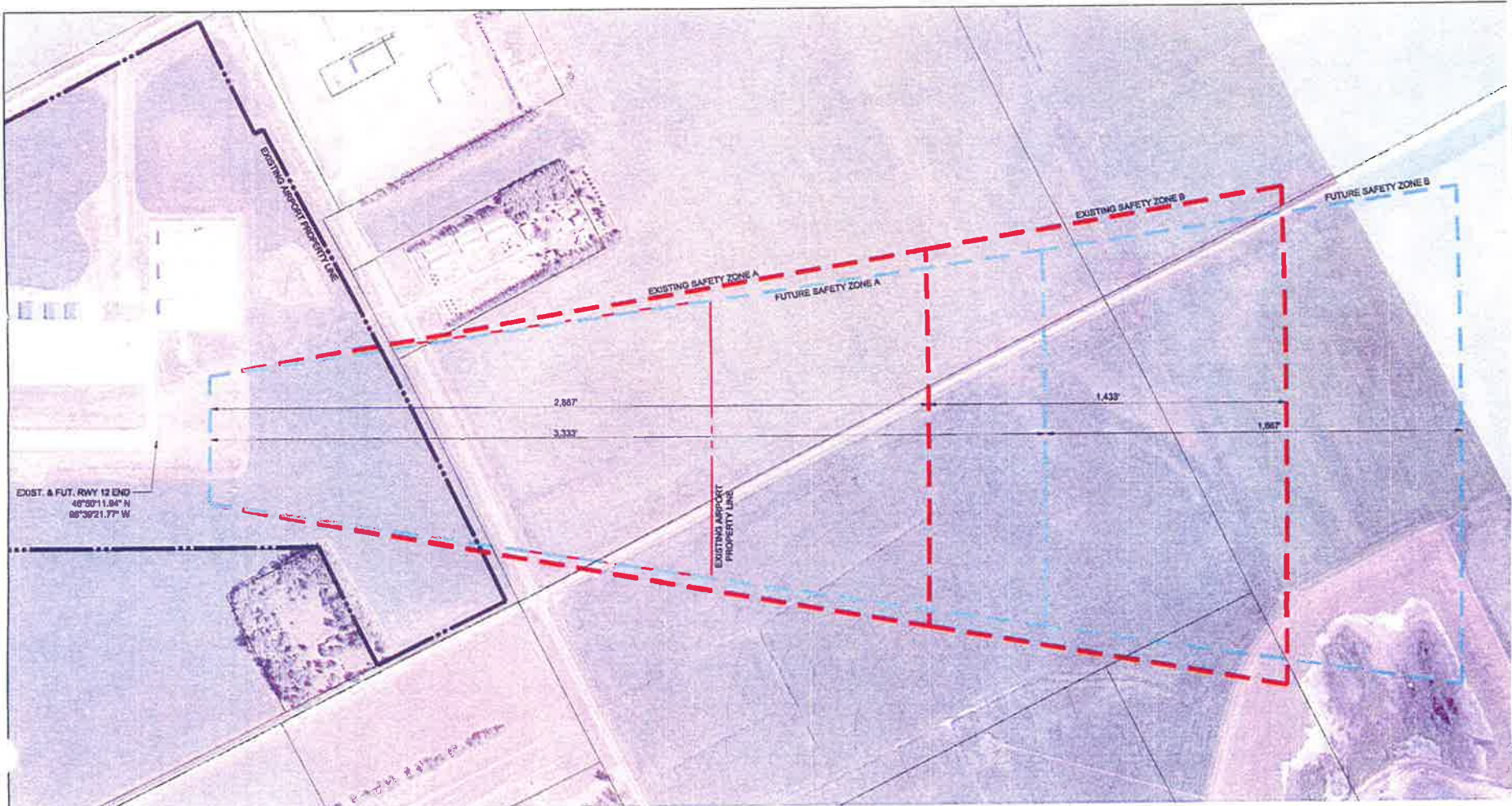
AIRPORT ZONING MAP
 FOR THE
 MOORHEAD MUNICIPAL
 AIRPORT

REV. DATE DESCRIPTION
 11/2023

PROJECT NO. AMOOR000412
 ISSUE DATE DEC. 11, 2023
 DRAWN BY MSH
 CHECKED BY MSH
 DESIGNED BY MSH
 11/2023

EXISTING & FUTURE
 AIRSPACE ZONING
 RUNWAY 12 ZONES A & B

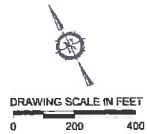
SHEET
 4
 OF 7 SHEETS



EXIST. & FUT. RWY 12 END
 48°50'11.84" N
 88°38'21.77" W

LEGEND

EXISTING	FUTURE	
		PROPERTY LINE
		EASEMENT
		PARCEL LINES
		PAVEMENT
		SAFETY ZONES



SEH FILE NO. AMOORHEAD02
 ISSUE DATE DEC 11, 2007
 DESIGNED BY MRLU
 DRAWN BY MRLU

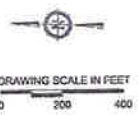
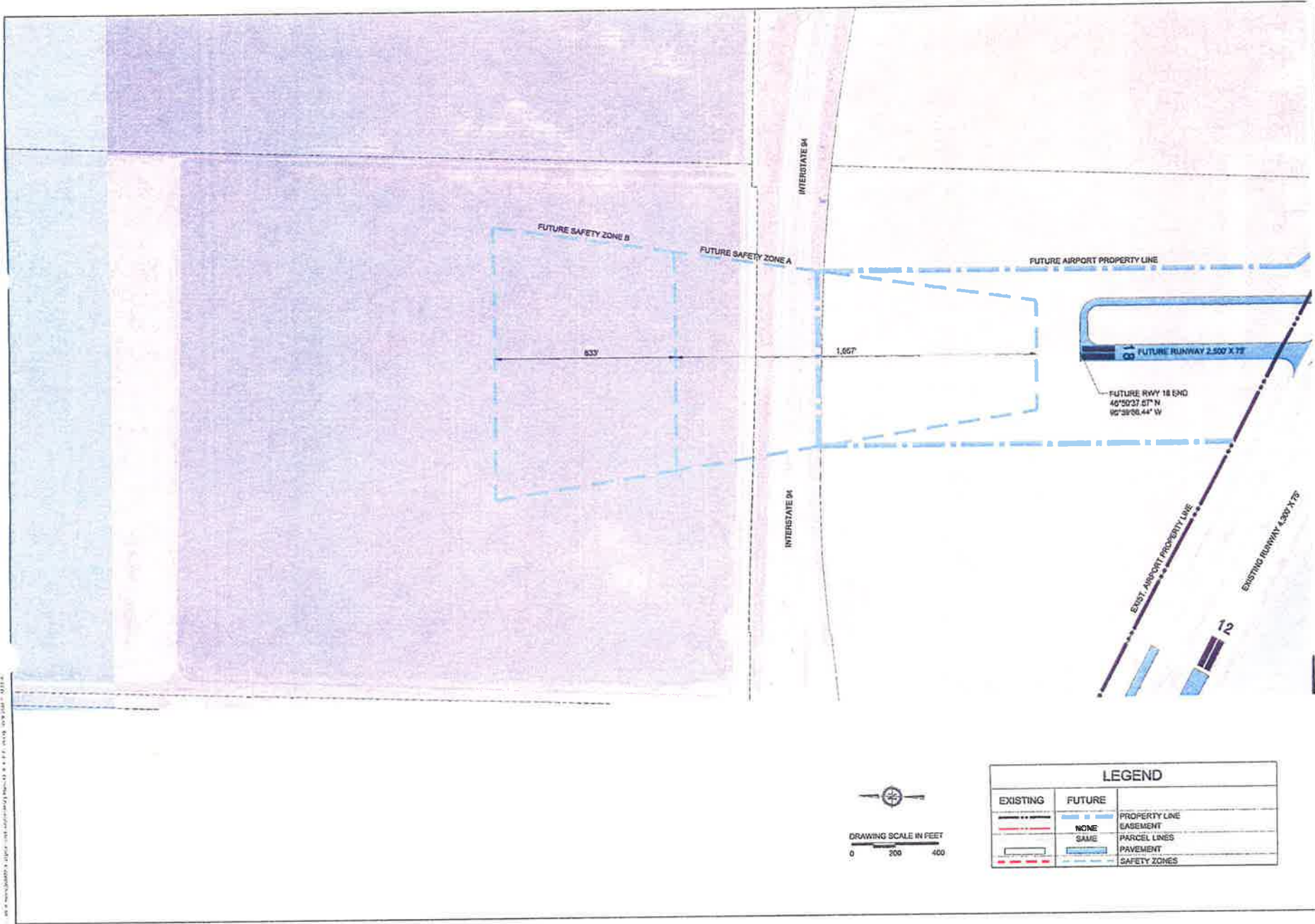
**AIRPORT ZONING MAP
 FOR THE
 MOORHEAD MUNICIPAL
 AIRPORT**

SEH FILE NO. AMOORHEAD02
 ISSUE DATE DEC 11, 2007
 DESIGNED BY MRLU
 DRAWN BY MRLU

**EXISTING & FUTURE
 AIRSPACE ZONING
 RUNWAY 30 ZONES A & B**

SHEET
5
 OF 7 SHEETS

www.garrettcounty.com



LEGEND	
	EXISTING PROPERTY LINE
	FUTURE PROPERTY LINE
	EXISTING EASEMENT
	FUTURE EASEMENT
	EXISTING PARCEL LINES
	FUTURE PARCEL LINES
	EXISTING PAVEMENT
	FUTURE PAVEMENT
	EXISTING SAFETY ZONES
	FUTURE SAFETY ZONES



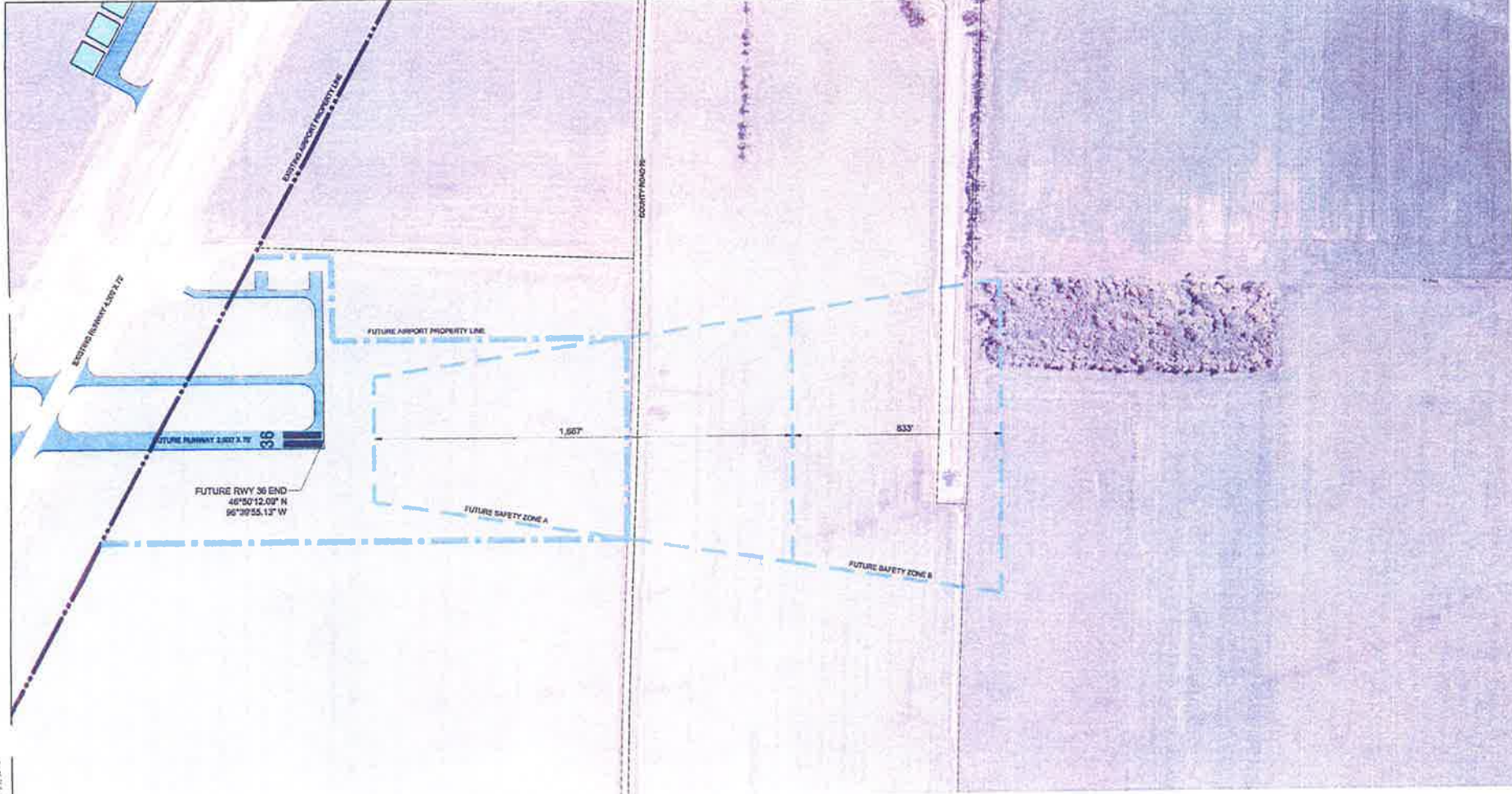
THIS DRAWING IS THE PROPERTY OF SEH CONSULTING, INC. AND IS NOT TO BE REPRODUCED OR TRANSMITTED IN ANY FORM OR BY ANY MEANS, ELECTRONIC OR MECHANICAL, WITHOUT THE WRITTEN PERMISSION OF SEH CONSULTING, INC.
 DATE: DEC 11, 2007
 DRAWN BY: [unintelligible]
 CHECKED BY: [unintelligible]

AIRPORT ZONING MAP FOR THE MOORHEAD MUNICIPAL AIRPORT

NO. 067
 REVISIONS

DATE FILED: DEC 11, 2007
 FILED BY: [unintelligible]
 COUNTY: GARRETT
 STATE: MARYLAND

FUTURE AIRSPACE ZONING RUNWAY 18 ZONES A & B



C:\Users\jwheeler\Documents\2007\2007_01\2007_01_20_01\2007_01_20_01.dwg, 12/11/2007 10:50 AM



LEGEND		
EXISTING	FUTURE	PROPERTY LINE
---	---	EASEMENT
---	---	PARCEL LINES
---	---	PAVEMENT
---	---	SAFETY ZONES
---	---	NONE
---	---	SAME



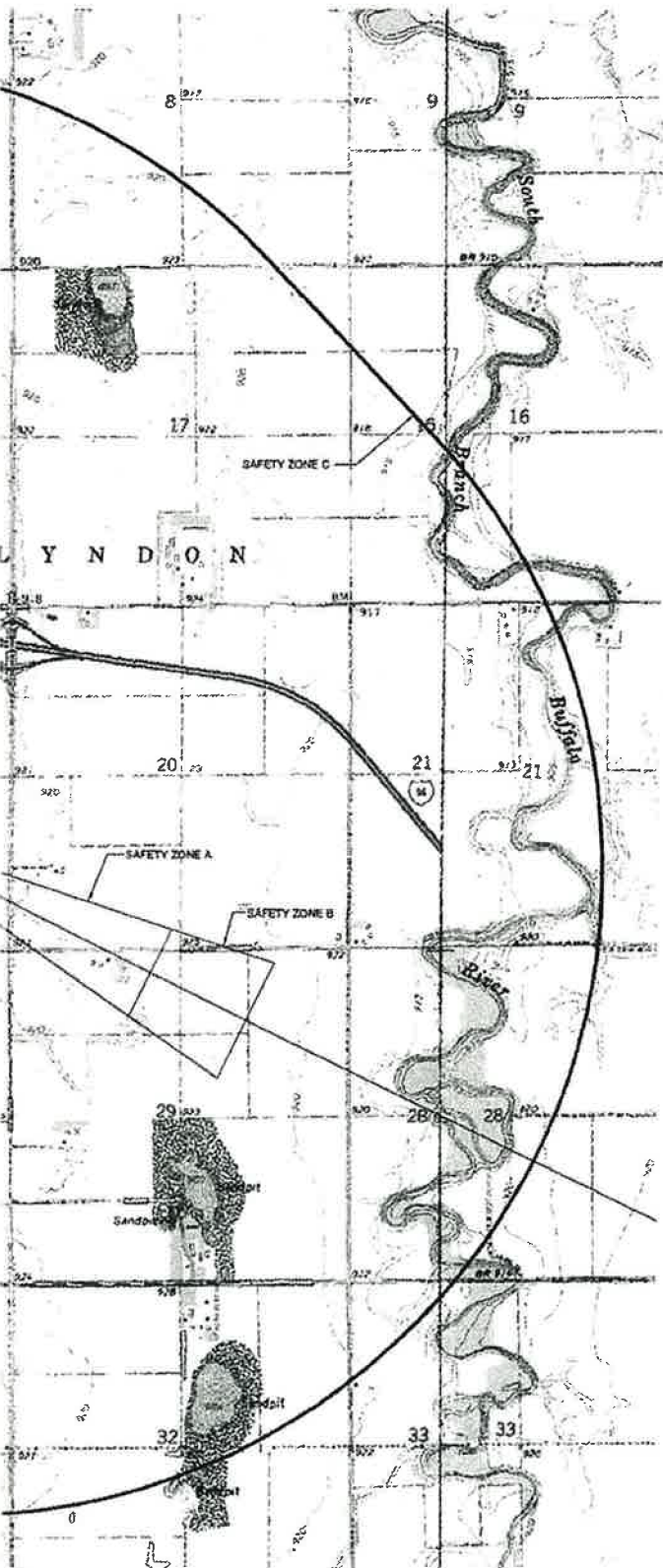
SUSTAINABLE ENGINEERING & ARCHITECTURE
 1111 SOUTH WASHINGTON AVENUE, SUITE 200
 MOOREHEAD, MISSISSIPPI 39506
 601.934.3333
 www.sehinc.com

**AIRPORT ZONING MAP
 FOR THE
 MOORHEAD MUNICIPAL
 AIRPORT**

PROJECT NO.: 2007-01
 DATE: 12/11/2007
 DRAWN BY: J. WHEELER
 CHECKED BY: J. WHEELER
 APPROVED BY: J. WHEELER

SHEET NO.: 7
 OF 7 SHEETS

EXISTING & FUTURE
 AIRSPACE ZONING
 RUNWAY 36 ZONES A & B



Safety Zone Use Restrictions:

General restrictions: No use shall be made of any land in any of the safety zones which creates or causes interference with the operation of radio or electronic facilities on the airport or with radio or electronic communications between the airport and aircraft, makes it difficult for pilots to distinguish between airport lights and other lights, results in glare in the eyes of pilots using the airport, impairs visibility in the vicinity of the airport, or otherwise endangers the landing, taking off, or maneuvering of aircraft.

Zone A: Safety Zone "A" shall contain no buildings, temporary structures, exposed transmission lines, or other similar land use structural hazards, and shall be restricted to those uses which will not create, attract, or bring together an assembly of persons thereon. Permitted uses may include, but are not limited to, such uses as agriculture (seasonal crops), horticulture, raising of livestock, animal husbandry, wildlife habitat, light outdoor recreation (nonmotorized), cemeteries, and auto parking.

Zone B: Safety Zone "B" shall be restricted in use as follows. Each use shall be on a site whose area shall not be less than three acres. Each use shall not create, attract, or bring together a site population that would exceed 15 times that of the site acreage. Each site shall have no more than one building plot upon which any number of structures may be erected. The following uses are specifically prohibited in Zone B: churches, hospitals, schools, theaters, stadiums, hotels and motels, trailer courts, camp grounds, and other places of public or semipublic assembly.

Zone C: Safety Zone "C" is subject only to the general restrictions, as stated above. Safety Zone "C" is enclosed within the perimeter of the horizontal zone.

FUTURE AIRPORT ZONING DIMENSIONS

RUNWAY	ZONE	INNER WIDTH	LENGTH	OUTER WIDTH	SLOPE
10/30	SAFETY ZONE A	500'	3,333'	1,500'	34:1
	SAFETY ZONE B	1,500'	1,667'	2,000'	34:1
	SAFETY ZONE C	10,000' RADIUS FROM END OF PRIMARY SURFACE			
18/36	SAFETY ZONE A	500'	1,667'	633'	34:1
	SAFETY ZONE B	833'	833'	1,000'	34:1
	SAFETY ZONE C	10,000' RADIUS FROM END OF PRIMARY SURFACE			

SEH WORKING CENTER OF
 1000 W. 10TH ST. SUITE 200
 MOORHEAD, MN 56501
 PHONE: 827.480.2000
 FAX: 827.482.7100
 MOBILE: 800.332.2065
 www.seh.com



I HEREBY CERTIFY THAT THIS PLAN, SPECIFICATION, OR REPORT WAS PREPARED BY ME OR UNDER MY DIRECT SUPERVISION AND THAT I AM A LICENSED PROFESSIONAL ENGINEER IN THE STATE OF MINNESOTA. I AM NOT PROVIDING ENGINEERING SERVICES UNDER THE LAWS OF THE STATE OF MINNESOTA.
 E.G. HANSEN, P.E.
 DATE: OCT. 22, 2007 License No. 43838

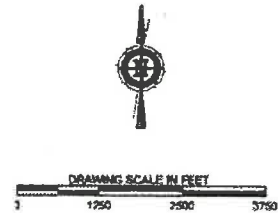
AIRPORT ZONING MAP FOR THE MOORHEAD MUNICIPAL AIRPORT

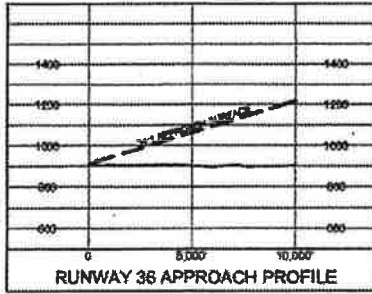
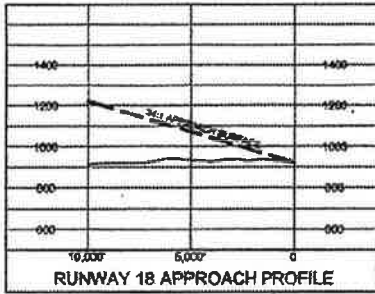
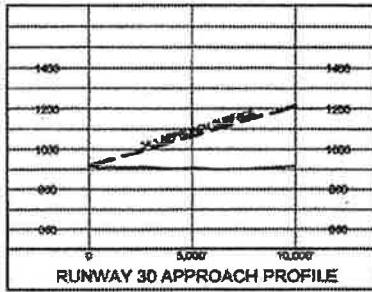
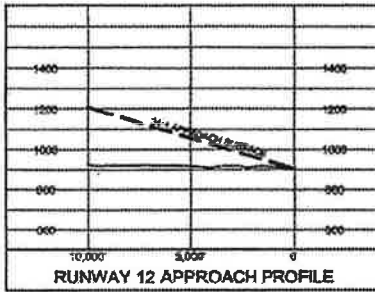
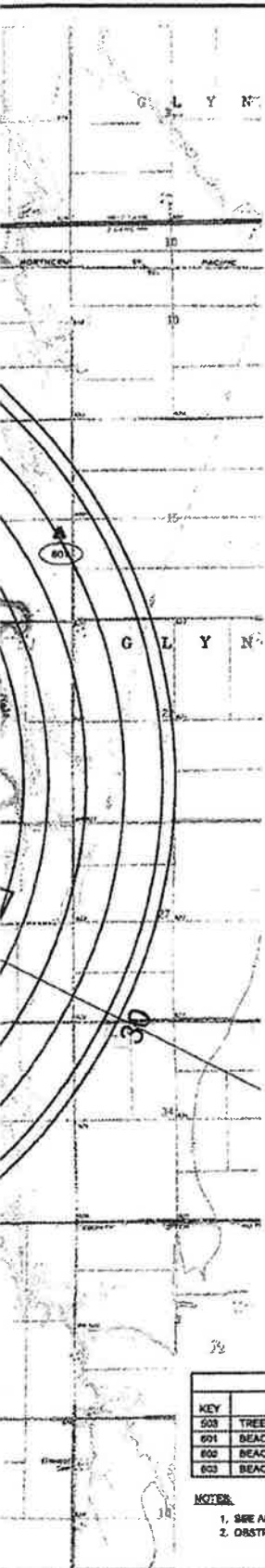
NO. DATE DESCRIPTION RESTRICTIONS

SEH FILE NO. A/MOORHEAD/001
 ISSUE DATE OCT. 22, 2007
 DESIGNED BY NML
 DRAWN BY NML
 Seal: E.G. Hansen, Inc. 65470
 © 2007 Seal State, Inc. Moorhead, MN

MN/DOT LAND USE ZONING PLAN

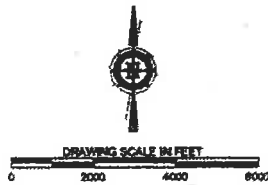
SHEET
3
 OF 3 SHEETS





FAA APPROACH SURFACE DIMENSIONS (PART 77)

RUNWAY	INNER WIDTH	LENGTH	OUTER WIDTH	SLOPE
12	500'	10,000'	3,900'	34:1
30	500'	10,000'	3,900'	34:1
18	500'	10,000'	3,900'	34:1
36	500'	10,000'	3,900'	34:1



SCHEDULE OF OBSTRUCTIONS

KEY	DESCRIPTION	ELEVATION	COMMENTS	DISPOSITION	LATITUDE	LONGITUDE
503	TREES	1005'	SEE SHEET 5	LIGHTED	46°50'4.88"	98°30'15.48"
601	BEACON ON COMMUNICATION TOWER	1285'	PENETRATION OF 3 Nm RADIUS	LIGHTED	46°51'18.95"	98°30'11.84"
602	BEACON ON COMMUNICATION TOWER	1137'	PENETRATION OF 5 Nm RADIUS	LIGHTED	46°51'50.95"	98°44'11.31"
603	BEACON ON COMMUNICATION TOWER	1327'	PENETRATION OF 5 Nm RADIUS	LIGHTED	46°49'38.27"	98°45'01.72"

- NOTES:**
- SEE APPROACH PLAN & PROFILE SHEETS FOR OTHER APPROACH SURFACE OBSTRUCTIONS
 - OBSTRUCTIONS 602 AND 603 ARE LOCATED NEAR THE CITY OF MOORHEAD WEST OF THE AIRPORT

JERRY L. HANSEN, LICENSED SURVEYOR
 LICENSE NO. 10000
 REGISTERED PROFESSIONAL ENGINEER
 LICENSE NO. 10000
 REGISTERED PROFESSIONAL ENGINEER
 LICENSE NO. 10000
 REGISTERED PROFESSIONAL ENGINEER
 LICENSE NO. 10000

PROJECT: AIRPORT ZONING MAP FOR MOORHEAD MUNICIPAL AIRPORT
 DRAWN BY: JERRY L. HANSEN
 CHECKED BY: JERRY L. HANSEN
 DATE: OCT. 22, 2007
 SCALE: AS SHOWN

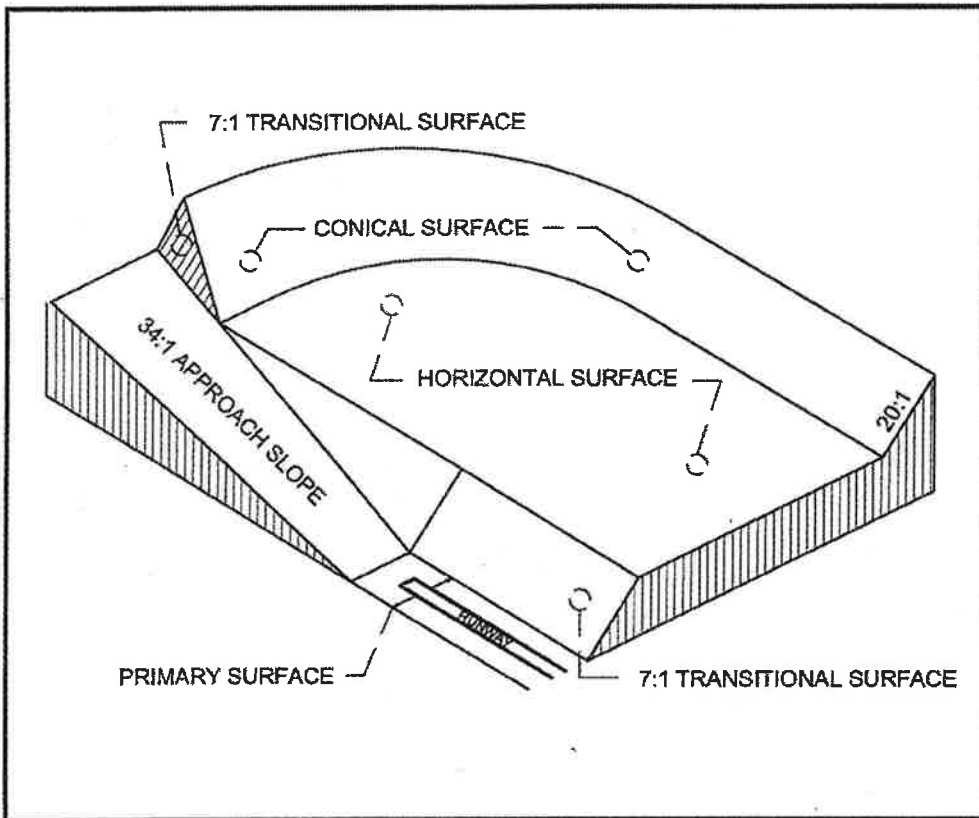
**AIRPORT ZONING MAP
 FOR THE
 MOORHEAD MUNICIPAL
 AIRPORT**

NO.	DATE	DESCRIPTION

SHEET FILE NO. AMOORH08A.00
 ISSUE DATE: OCT. 22, 2007
 DEMAND BY: MBLU
 DRAWN BY: MBLU
 Checked by: Jerry L. Hansen, Inc. © 2007
 © 2007 Jerry L. Hansen, Inc.

**AIRSPACE
 ZONING
 PLAN**

ZONING PLAN MUNICIPAL AIRPORT MOORHEAD, MINNESOTA



IMAGINARY SURFACES

NO SCALE



PLAN APPROVAL	
ZONING BOARD CHAIRPERSON	
Approved _____	
Date _____	
ZONING BOARD SECRETARY / CITY CLERK	
Approved _____	
Date _____	

SEH
 2555 Industrial Avenue
 Moorhead, MN 56501
 Phone: 828.222.2000
 Fax: 828.222.2000
 Email: info@seh.com
 Website: www.seh.com

SEH
 2555 Industrial Avenue
 Moorhead, MN 56501
 Phone: 828.222.2000
 Fax: 828.222.2000
 Email: info@seh.com
 Website: www.seh.com

AIRPORT ZONING MAP
 FOR THE
 MOORHEAD MUNICIPAL
 AIRPORT

NO.	DATE	DESCRIPTION	REVISIONS

SEH FILE NO. A-MOORHEAD-02
 ISSUE DATE OCT. 2, 2007
 DESIGNED BY MRLU
 DRAWN BY MRLU
 © 2007 Sealed Air Corporation, Inc.

TITLE
 SHEET

SHEET
 1
 OF 3 SHEETS